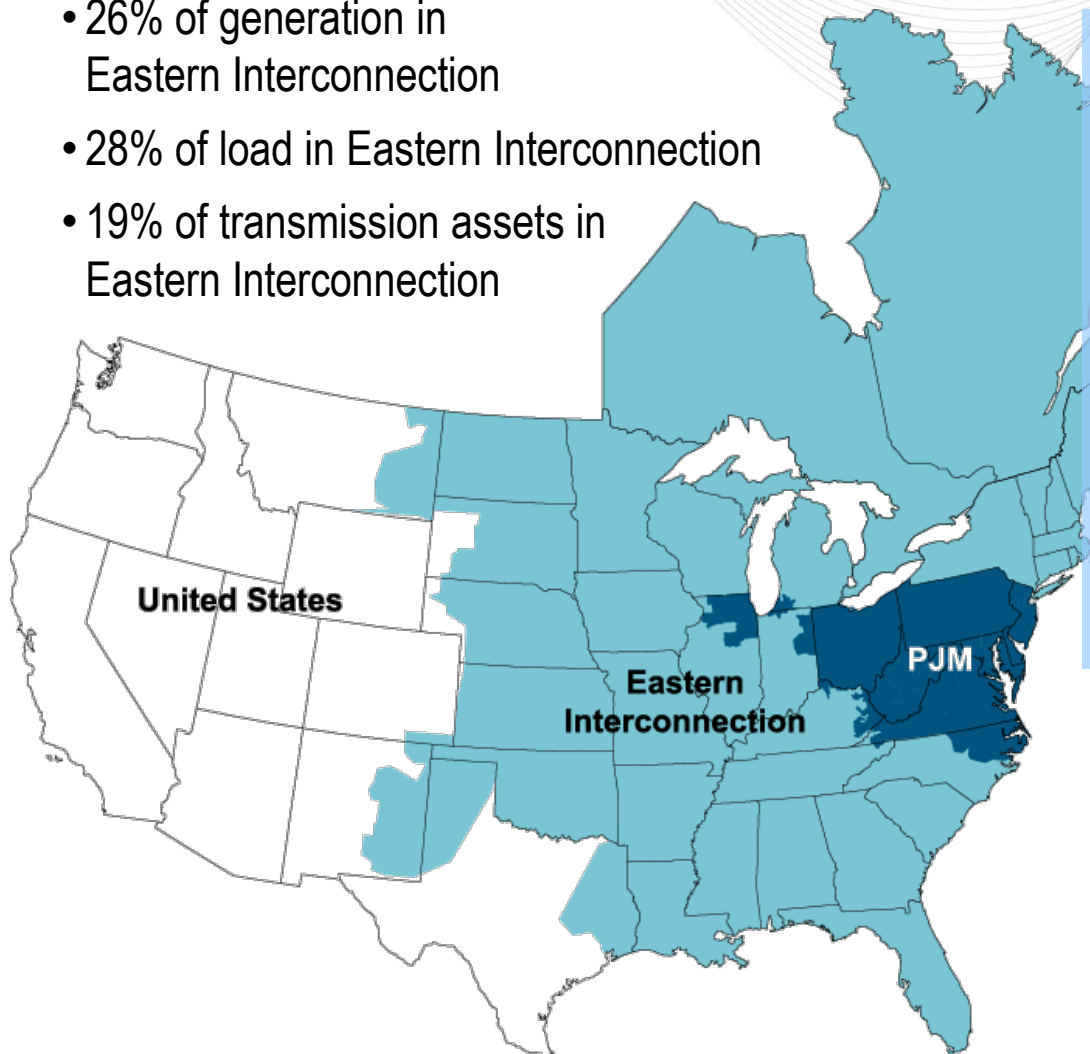


PJM as Part of the Eastern Interconnection

- 26% of generation in Eastern Interconnection
- 28% of load in Eastern Interconnection
- 19% of transmission assets in Eastern Interconnection



KEY STATISTICS

PJM member companies	750+
millions of people served	60
peak load in megawatts	163,848
MW of generating capacity	185,600
miles of transmission lines	65,441
GWh of annual energy generation	832,331
sources	1,365
square miles of territory	214,000
area served	13 states + DC
Internal/external tie lines	142

**21% of U.S. GDP
produced in PJM**

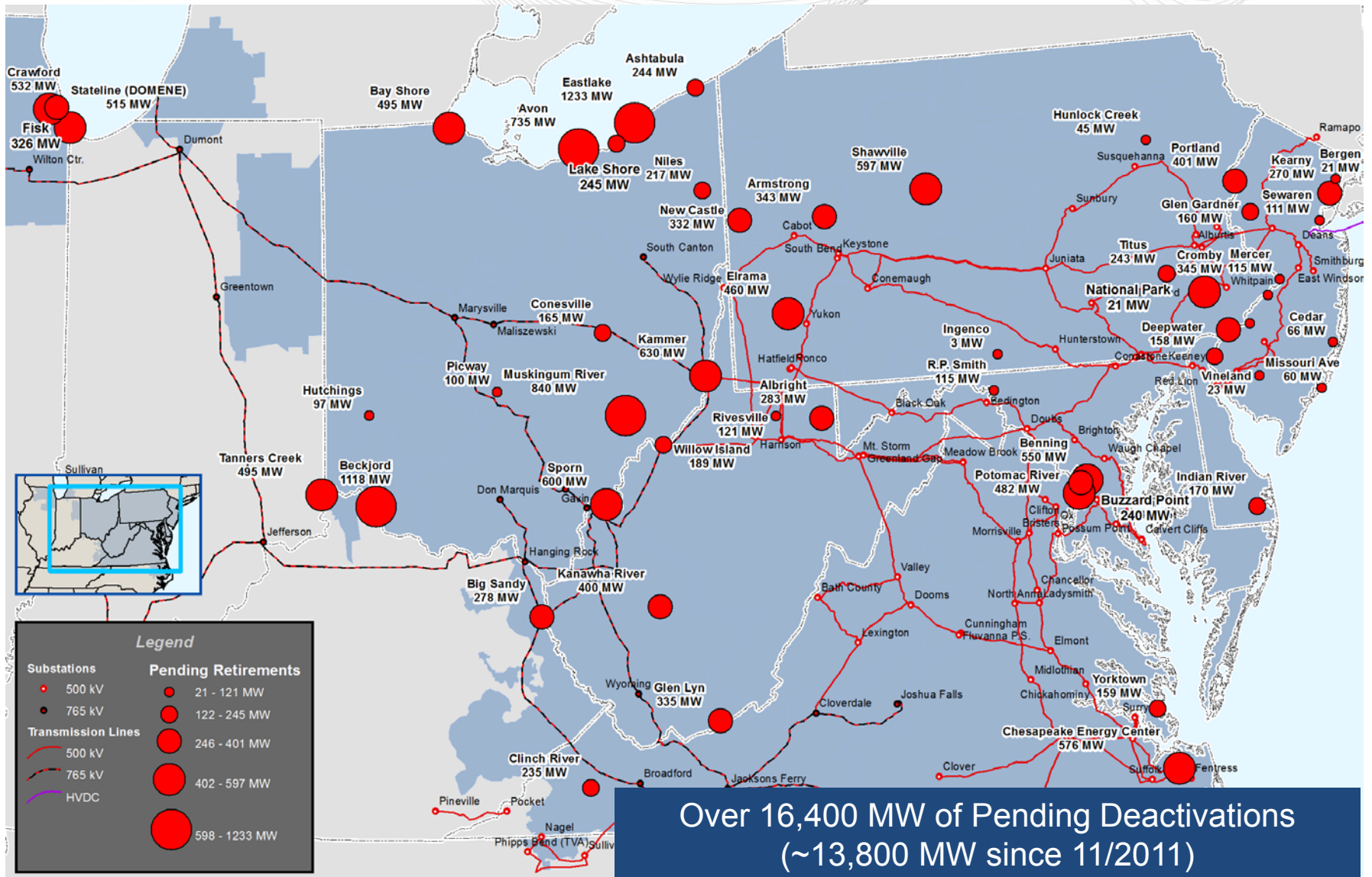
As of 1/4/2012

Nearly 25 GW coal generation at risk based on economic analysis

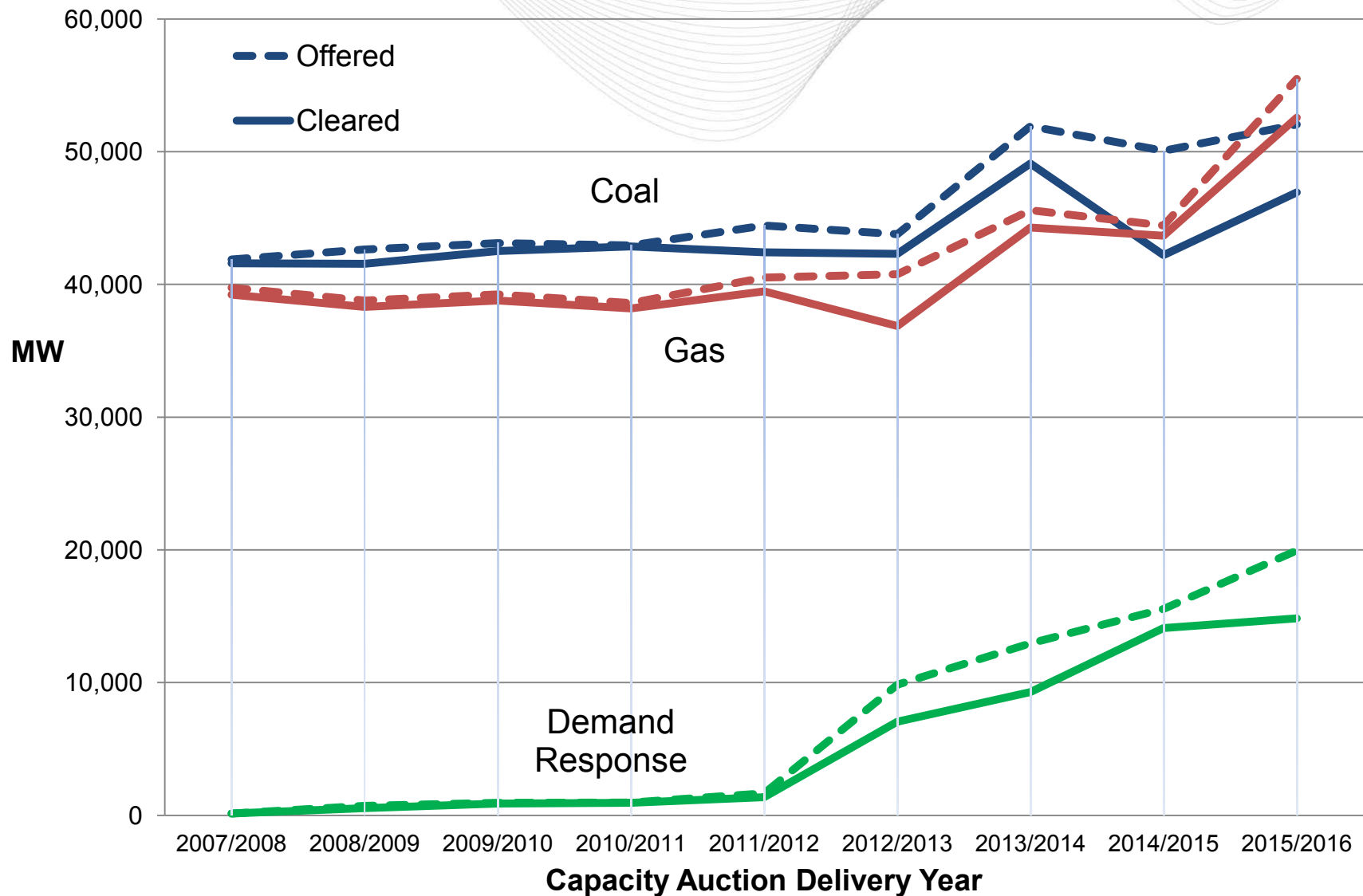
Capacity Revenue Needed	PJM RTO	MAAC	Rest of PJM
< ½ Net CONE	38,334	12,634	25,700
½ Net CONE – Net CONE	14,147	2,908	11,239
> Net CONE	11,051	3,194	7,857

Note: CONE is the Cost of New Entry (Simple Cycle Combustion Turbine)

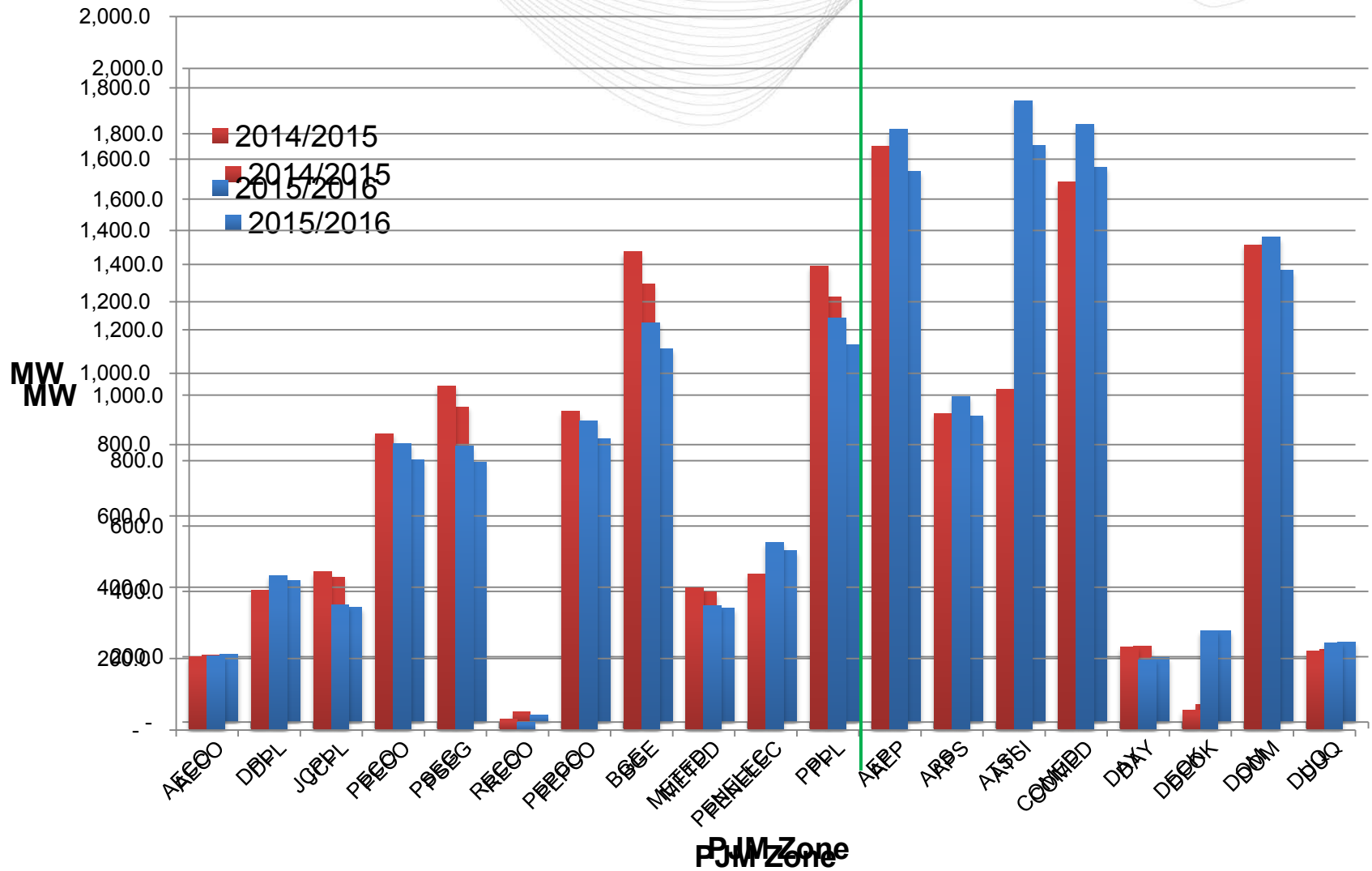
Source: PJM Report, *Coal Capacity At-Risk for Retirement in PJM: Potential Impacts of the Finalized EPA Cross State Air Pollution Rule and Proposed National Emissions Standards for Hazardous Air Pollutants*, August 2011

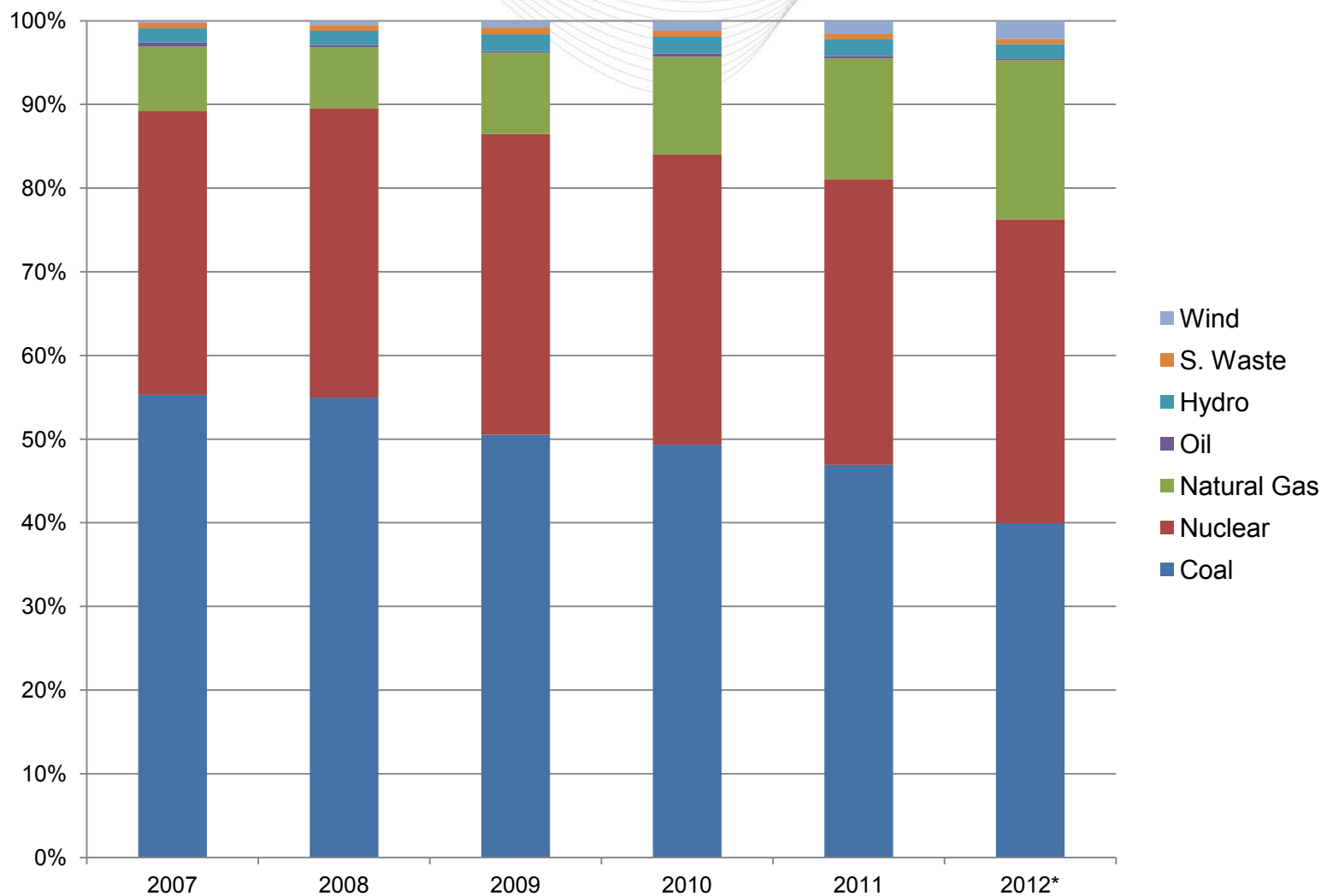


Capacity Resources: In Transition

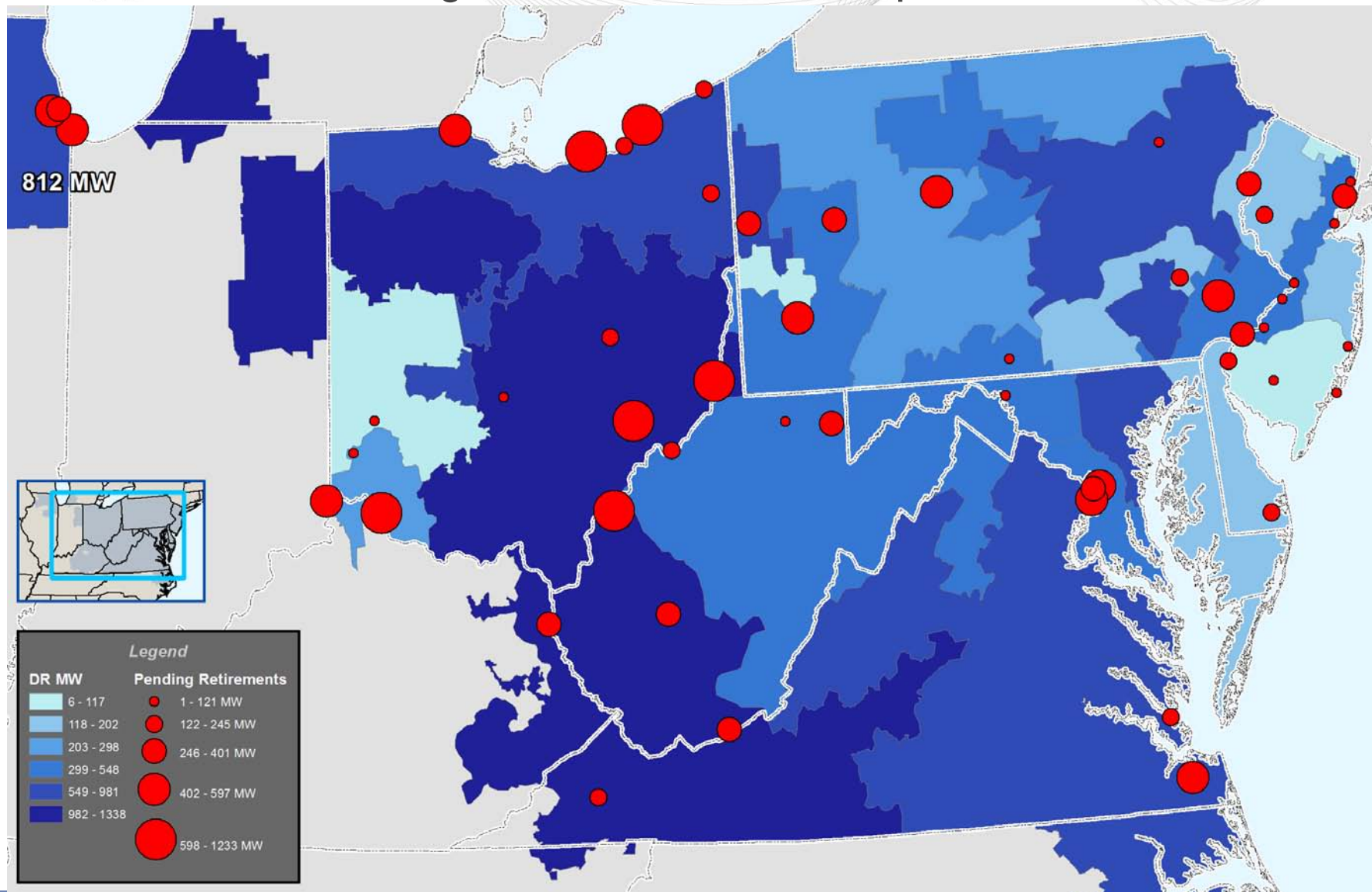


Shift in Demand Response Capacity



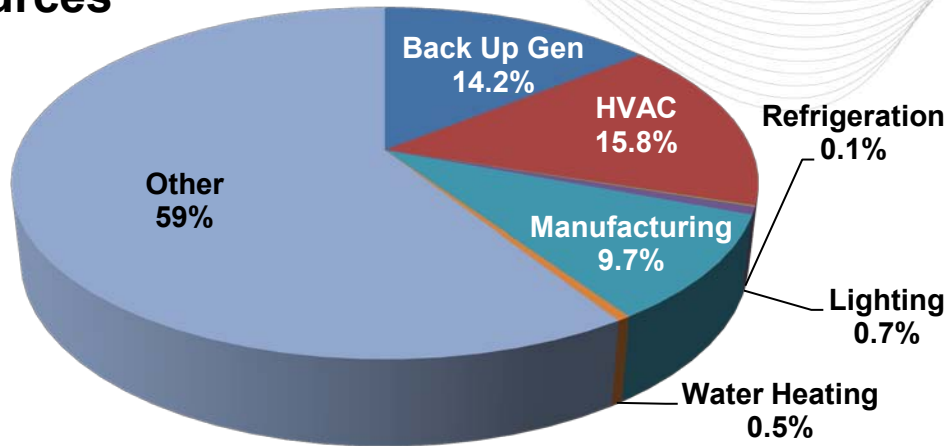


Registered Demand Response for 2012/2013



Sources & Segments of Emergency DR 12/13

Sources



Business Segments

